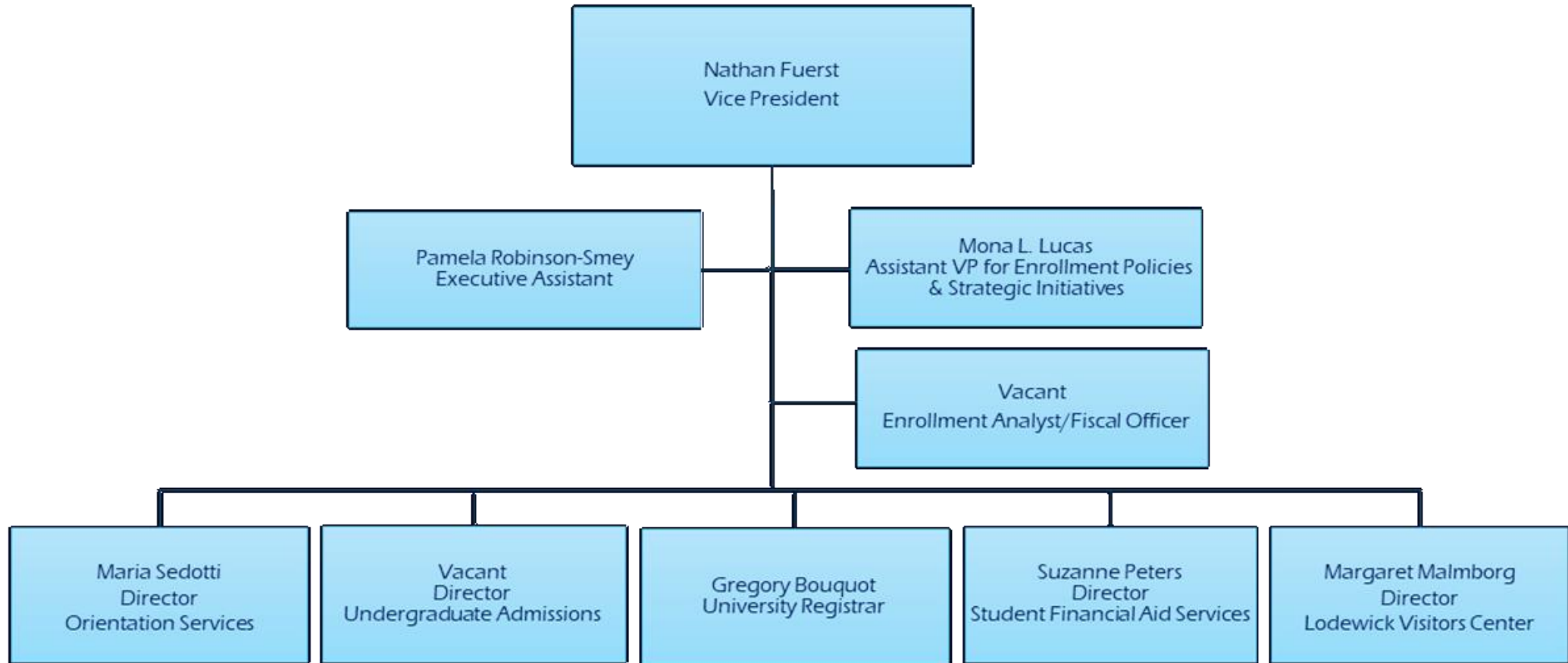




New Student Enrollment Update

September 17, 2018

Enrollment Leadership Team



Freshmen Application Trends

| | Fall 2014 | Fall 2015 | Fall 2016 | Fall 2017 | Fall 2018 | Difference |
|---------------------|---------------|---------------|---------------|---------------|---------------|--------------|
| Storrs | 31,280 | 34,978 | 35,980 | 34,198 | 34,885 | +2.0% |
| Avery Point | 194 | 251 | 242 | 224 | 230 | +2.7% |
| Hartford | 251 | 264 | 318 | 322 | 358 | +11.2% |
| Stamford | 241 | 276 | 305 | 1,896 | 2,317 | +22.2% |
| Waterbury | 173 | 187 | 187 | 256 | 239 | -6.6% |
| All Campuses | 32,139 | 35,956 | 37,032 | 36,896 | 38,029 | +3.1% |

Storrs Freshmen

| | Fall 2014 | Fall 2015 | Fall 2016 | Fall 2017 | Fall 2018 | Difference |
|---------------------|-----------|-----------|-----------|-----------|-----------|------------|
| Enrollees | 3,588 | 3,774 | 3,822 | 3,683 | 3,749 | +67 |
| Mean New SAT | NA | NA | NA | 1294 | 1306 | +12 |
| ACT | 27.9 | 28.0 | 28.3 | 28.7 | 28.6 | -0.1 |
| % Students of Color | 33.4% | 32.3% | 36.3% | 35.1% | 39.7% | +4.6% |
| % In State | 61% | 57.5% | 64.2% | 64.5% | 64.3% | -0.2% |
| % Out of State | 32.2% | 33.6% | 26.1% | 21.5% | 22.7% | +1.2% |
| % International | 6.8% | 8.9% | 9.7% | 14.0% | 13.0% | -1.0% |
| Honors Students | 512 | 519 | 523 | 547 | 555 | 8 |

Storrs Freshmen Diversity

| Ethnic Composition (%) | Fall 2014 | Fall 2015 | Fall 2016 | Fall 2017 | Fall 2018 |
|--------------------------|--------------|--------------|--------------|--------------|--------------|
| Black / African American | 5.9% | 7.2% | 7.4% | 6.8% | 8.0% |
| Asian | 13.4% | 12.6% | 11.7% | 12.1% | 11.8% |
| Hispanic/ Latino | 10.6% | 9.2% | 13.7% | 11.8% | 16.2% |
| Am Indian/ Alaska Native | 0.1% | 0.3% | 0.1% | 0.1% | 0.2% |
| 2 or More | 3.3% | 2.9% | 3.5% | 4.2% | 3.5% |
| Hawaiian / Pac Islander | 0.1% | 0.1% | 0.0% | 0.1% | 0.0% |
| Minority Subtotal | 33.4% | 32.3% | 36.3% | 35.1% | 39.7% |

Storrs Freshmen School & Colleges

| By School and College | Fall 2017 Actual | Fall 2018 Target | Fall 2018 Actual |
|-----------------------|------------------|------------------|------------------|
| ACES | 826 | 785 | 727 |
| CAHNR | 259 | 260 | 237 |
| Business | 461 | 520 | 572 |
| CLAS | 1,194 | 1,100 | 1,162 |
| Engineering Business | 18 | 15 | 21 |
| Engineering | 670 | 720 | 731 |
| Fine Arts | 128 | 160 | 155 |
| Nursing | 103 | 100 | 106 |
| RHAG | 24 | 40 | 38 |
| Grand Total | 3,683 | 3,700 | 3,749 |

Regional Freshmen

| | Fall 2014 | Fall 2015 | Fall 2016 | Fall 2017 | Fall 2018 |
|---------------------|-----------|-----------|-----------|-----------|-----------|
| Enrollees | 1406 | 1,363 | 1,297 | 1,609* | 1,806* |
| Mean New SAT | NA | NA | NA | 1092 | 1107 |
| % Students of Color | 43.0% | 41.0% | 48.4% | 55.0% | 56.3% |

* Includes Storrs Spring Admission Students

Regional Freshmen

(Excludes Storrs Spring Admits)

| | Fall 2017 Actual | Fall 2018 Target | Fall 2018 Actual |
|----------------------|---------------------|---------------------|---------------------|
| Avery Point | 203 | 260 | 176 |
| Hartford | 458 | 440 | 536 |
| Stamford | 540 | 500 | 634 |
| Waterbury | 302 | 275 | 286 |
| Storrs Spring Admits | 106 | 150 | 174 |
| TOTAL | 1,609 | 1,625 | 1,806 |

Storrs Spring Admits

| | Fall 2017 Actual | Fall 2018 Actual |
|-------------|------------------|------------------|
| Avery Point | 12 | 25 |
| Hartford | 63 | 93 |
| Stamford | 21 | 27 |
| Waterbury | 10 | 29 |
| TOTAL | 106 | 174 |

New Transfers

| | Fall 2014 | Fall 2015 | Fall 2016 | Fall 2017 | Fall 2018 | Difference |
|-----------|-----------|-----------|-----------|-----------|-----------|------------|
| Storrs | 805 | 871 | 874 | 851 | 764 | -87 |
| Regionals | 226 | 285 | 237 | 261 | 207 | -54 |
| Total | 1031 | 1,156 | 1,111 | 1,112 | 971 | -141 |

New Student Enrollment Summary

| | Fall 2017 Actual | Fall 2018 Target | Fall 2018 Actual |
|--------------------|---------------------|---------------------|---------------------|
| Storrs Freshmen | 3,683 | 3,700 | 3,749 |
| Storrs Spring Adm | 106 | 150 | 174 |
| Storrs Transfers | 851 | 850 | 764 |
| Regional Freshmen | 1,503 | 1,475 | 1,632 |
| Regional Transfers | 261 | 250 | 207 |
| Total | 6,404 | 6,425 | 6,526 |

Financial Aid Update

- 28% of Freshmen were awarded Federal Pell Grants
- 75% of Freshmen were awarded some type of aid (loans, scholarships, grants, etc.)

Questions?

Nathan Fuerst, Vice President

Division of Enrollment Planning & Management

nathan.fuerst@uconn.edu

486-1463

Fall Open House Dates:

Sunday, September 30th

AND

Sunday, October 21st